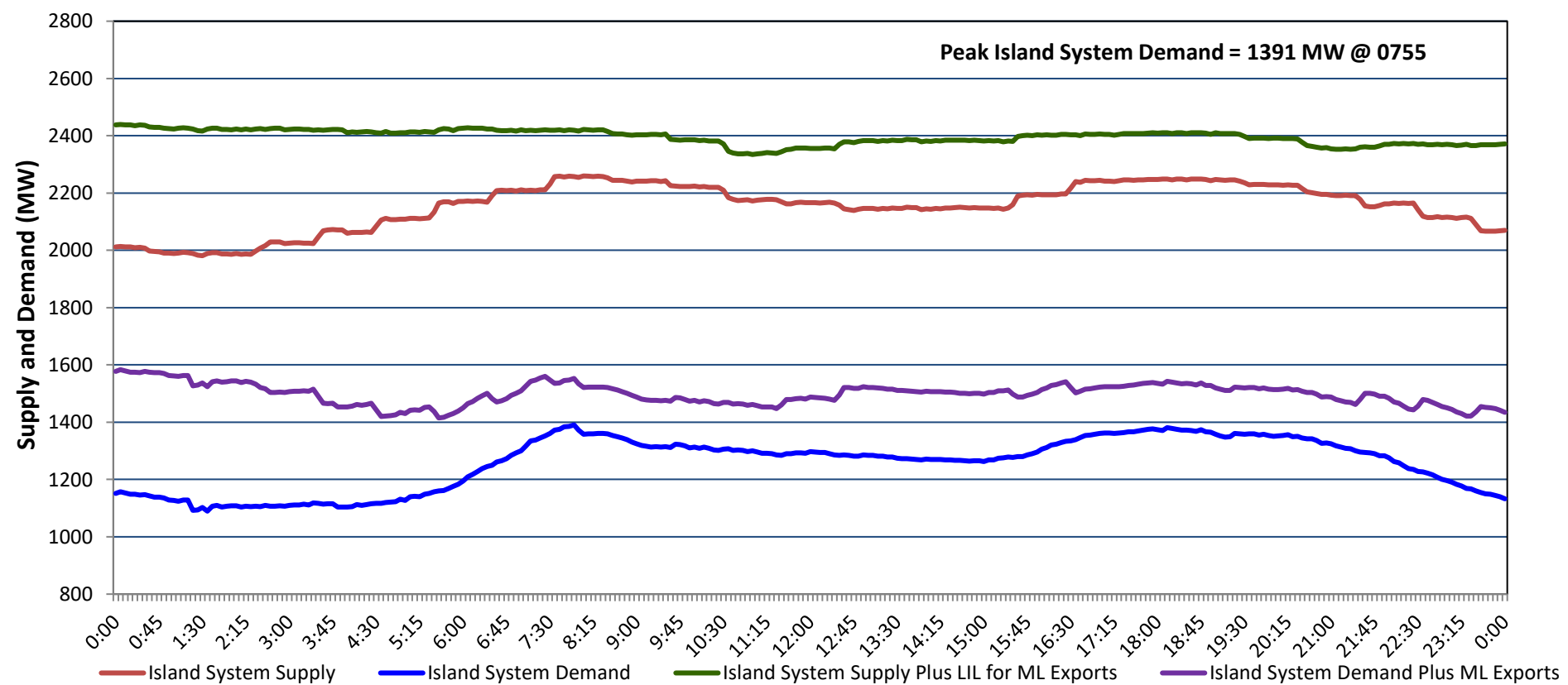


# Newfoundland Labrador Hydro (NLH) Supply and Demand Status Report Filed Wednesday, February 19, 2025

## Section 1 Island Interconnected System - Supply, Demand & Exports Actual 24 Hour System Performance For Tuesday, February 18, 2025



### Island Supply Notes For February 18, 2025 <sup>1</sup>

A As of 2051 hours, February 14, 2025, Holyrood Unit 1 available at 70 MW due to forced derating (170 MW).

## Section 2 Island Interconnected System - Supply, Demand & Outlook

Wed, Feb 19, 2025	Island System Outlook <sup>2</sup>	Seven-Day Forecast	Island System Daily Peak Demand (MW)	
			Forecast <sup>8</sup>	Adjusted <sup>6</sup>
Island System Supply: <sup>4</sup>	<b>2,195 MW</b>	Wednesday, February 19, 2025	<b>1,320</b>	<b>1,215</b>
NLH Island Generation: <sup>3,7</sup>	1,595 MW	Thursday, February 20, 2025	1,365	1,259
NLH Island Power Purchases: <sup>5</sup>	95 MW	Friday, February 21, 2025	1,400	1,294
NP and CBPP Owned Generation:	205 MW	Saturday, February 22, 2025	1,420	1,314
LIL/ML Net Imports to Island: <sup>9</sup>	300 MW	Sunday, February 23, 2025	1,400	1,294
		Monday, February 24, 2025	1,400	1,294
7-Day Island Peak Demand Forecast:	<b>1,450 MW</b>	Tuesday, February 25, 2025	1,450	1,343

### Island Supply Notes For February 19, 2025

- Notes:
1. Generation outages for running and corrective maintenance are included. These are not unusual for power system operations. They generally do not impact customer supply. Hydro schedules outages to system equipment whenever possible to coincide with periods when customer demands are low and sufficient supply reserves are available. However, from time to time equipment outages are necessary and reserves may be impacted.
  2. As of 0800 Hours.
  3. Gross continuous unit output.
  4. Gross output from all Island sources (including Note 3).
  5. NLH Island Power Purchases include: ML Imports, Exploits Generation, Rattle Brook, Star Lake, Wind Generation and capacity assistance (when applicable).
  6. Adjusted for interruptible load and the impact of voltage reduction when applicable.
  7. Due to limitations inherent in the design of combustion turbines, the output of combustion turbines may be reduced in the event that ambient temperatures exceed the threshold required for full rated output. This threshold is dependent on the design of each turbine.
  8. Does not include ML Exports.
  9. LIL Import sunk in the Island System. Actual LIL flows will be restricted by various system conditions including, but not limited to, Island Load, ML Exports and Avalon Unit status.

## Section 3 Island Peak Demand and Exports Information Previous Day Actual Peak and Current Day Forecast Peak

Tue, Feb 18, 2025	Island Peak Demand <sup>10</sup>	7:55	1,391 MW
	Exports at Peak		162 MW
	LIL Net Imports to Island		5,905 MWh
Wed, Feb 19, 2025	Forecast Island Peak Demand		1,320 MW

Notes: 10. Island Demand is supplied by NLH generation and purchases, LIL Imports plus generation owned and operated by Newfoundland Power and Corner Brook Pulp & Paper (Deer Lake Power, DLP).